

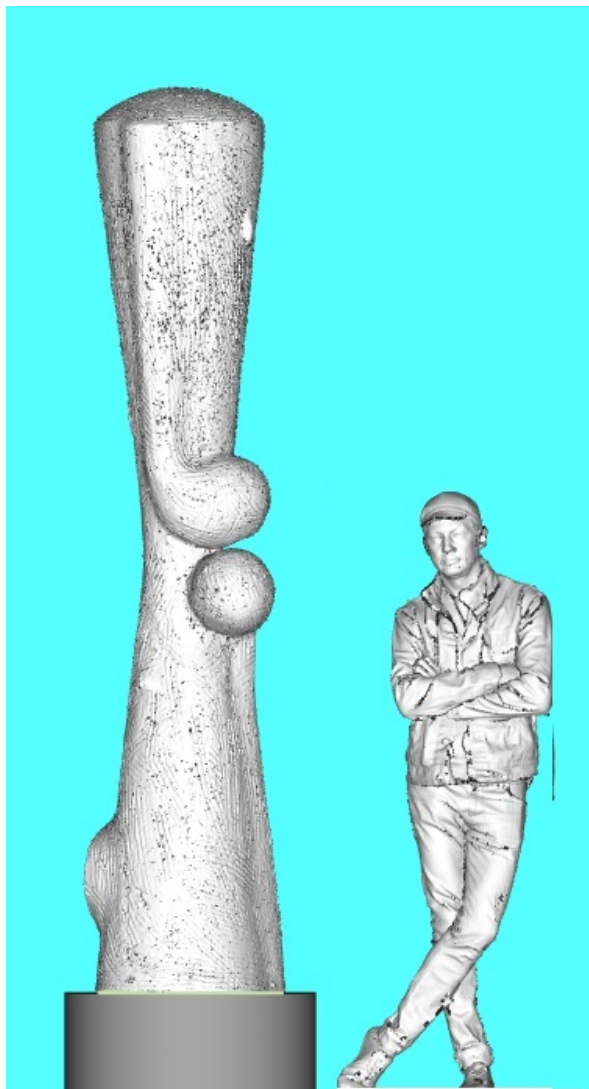
Sculpture Concept / Narrative

After the PAAC feedback on my first proposal, I went back to the drawing board. I took visual ideas from the first design and added an hour glass shape. The new piece suggests an abstracted sense of time passing while waiting for the train.

Fabrication

The fabricator for this proposal is Blue Mountain Fine Art. They are estimating a six month time frame for fabrication. BMFA has a solid reputation in the Oregon art community, and has constructed a numbers of iconic public art pieces all over the US.

Form 3D Foundry will 3D scan my maquette and print to the new scale of 9' for the casting process at BMFA.



9' sculpture on a 12"x 30"x 30" plinth next to a 6' tall figure

Base

TriMet is coordinating with the engineer team to revise the size of the plinth. The new concrete plinth, 12"x 30"x 30" will support a 9' tall aluminum alloy (A356.1) sculpture with 43.63 sqft. of surface area and an approximate weight of 153 lbs. excluding interior structure.

Care & Maintenance

"*Esperando*" would have an epoxy painted surface that is very durable and similar to automotive paint. BMFA will apply the following paints:

1. Tnemec Hi Build Epoxoline Series 66 primer
2. Tnemec Fluoronar (#1072)

The performance of "Tnemec" products is excellent for surface stability and color fastness.

"Fluoronar" is the top-of-the-line color coating.

Maintenances Schedule

| | |
|--------------------------------------|---|
| Yearly routine maintenance if needed | Hand wash with a mild solution of Envirotex Zyfo (non-ionic cleaner), water and soft cotton rags. Orvus® WA Paste soap is another art conservators recommended soap for yearly maintenance. |
|--------------------------------------|---|

The maintenance at **5-20 years** should be the same as the yearly plan. After 20 years the color vibrance could start to slowly fade. The sculpture could be repainted if needed down the road. Using the recommended cleaner and a light sanding before a new coat of paint would be recommended.

A PDF file with a full detail information of maintenance and restoration are available and will be submitted later for archival proposes.

Budget

| | |
|--|-----------------|
| Design | \$14,000 |
| Form 3D Print foundry and Delivering to BMFA | \$14,943 |
| Engineering | \$2,000 |
| Casting, Fabrication and Finishing | \$30,800 |
| Delivery from BMFA to TRIMET | \$2,500 |
| Artist fee | \$3,057 |
| Contingency Budget | \$2,700 |
| TOTAL | \$70,000 |

Michelle Traver will be managing the fabrication and process of this project. Im including **\$2,700** contingency budget from the artist fee. If the project runs smoothly the contingency budget will go back to the artist.

Fabrication Timeline

| | |
|-----------------------------|---|
| January 21st - April 14th | 3D print delivery to BMFA |
| April 15th - October 15th | BMFA fabrication and finish surface + Grummel Engineering |
| October 20th - October 31st | Delivery from BMFA to TriMet |
| November 1st | Installation by TriMet |

Fabricators / Contractors

Blue Mountain Fine Art
Tyler & Travis Fouts
bluemountainfineart@msn.com

Form 3D Foundry
Steve Christman
Steve@form.xyz

Grummel Engineering LLC
Joanne Shields, EIT
joanne@grummelengineering.com.

Maquette / Color Example



The texture surface is a gestural cross-hatching sunken relive is a texture style and important content in all my artwork.

The color is custom made from Tnemec for me (Ivan Carmona, Magenta) it takes its inspiration from colors in Alex Chiu's mural its not a direct representation Alex magenta color. The magenta has a warm red undertone.



They Grow by Alex Chiu